

GP Information

What is WARATAH?

The Wellness and Resilience Achieved Through Allied Health (WARATAH) program aims to increase access to allied health services and improve the overall health and wellbeing of those at risk or vulnerable within the community. The WARATAH program is funded by Murrumbidgee Primary Health Network.

Who is Marathon Health?

Marathon Health is the lead contractor for the WARATAH program and is responsible for the coordination of allied health services funded by the WARATAH program. We are a not-for-profit, registered charity with a vision of enabling communities to thrive through improved health and wellbeing.

What regions does it cover?

Under the WARATAH cycle of care, the Murrumbidgee region has been broken into three main regions:

Riverina	Border	Western/Wagga Wagga
Batlow, Cootamundra, Gundagai, Temora, Tumbarumba, Tumut, West Wyalong, Young	Berrigan, Corowa, Finley, Henty, Holbrook, Jerilderie, Lockhart, Moulamein, Tocumwal, Tooleybuc, Urana	Culcairn, Griffith, Hay, Hillston, Leeton, Narrandera

Who is eligible?

To be eligible for the WARATAH program, patients must identify as one of the following key cohorts and present with one or more of the conditions below:

Target cohorts	Target conditions
<ul style="list-style-type: none">• Low socio-economic status• Aboriginal and Torres Strait Islander Peoples• Mothers, babies and children• Young people• Older people, aged 65 years and over• Refugees	<ul style="list-style-type: none">• Obesity• At risk of obesity – particularly in youth• Diabetes• Chronic pain• Osteoarthritis• Frailty• Respiratory disease• Physical inactivity

Please note, patients with access to Medicare Benefits Scheme (MBS) subsidised allied health services under a GP Management Plan (GPMP) or Team Care Arrangement (TCA) should utilise those sessions before accessing allied health services through the WARATAH program.

Does my patient require a Chronic Disease Management Plan (CDMP) to access services through the WARATAH program?

A CDMP is not required to access the WARATAH program. Should a patient be eligible for a GPMP or TCA they should utilise this funding for allied health services prior to accessing additional services through the WARATAH program.

What allied health providers does the funding cover?

The three main allied health disciplines covered by the WARATAH program are dietetics, diabetes education and podiatry. Funding is also currently available for physiotherapy services in some areas of the Border region.

Psychology services are not covered under the WARATAH model. For a list of mental health services visit www.mphn.org.au/mental-health.

For more information on the services available in your community, please contact waratah@marathonhealth.com.au or phone (02) 6937 2000.

Will patients be able to access allied health services outside of WARATAH arrangements?

Yes. Patients will still be able to access additional allied health services through other funding models, or privately. However, if patients are eligible for services under MBS as part of a GPMP or TCA, this needs to be accessed before accessing services funded by the WARATAH program.

How can I refer a patient to the WARATAH program?

Marathon Health has created a centralised intake for the WARATAH program to simplify the referral process for GPs, allied health subcontractors and patients. For a patient to access WARATAH services, a GP referral must be completed and sent to Marathon Health.

Referrals can be made electronically by accessing the referral form at marathonhealth.com.au/waratah or by sending the referral form by email.

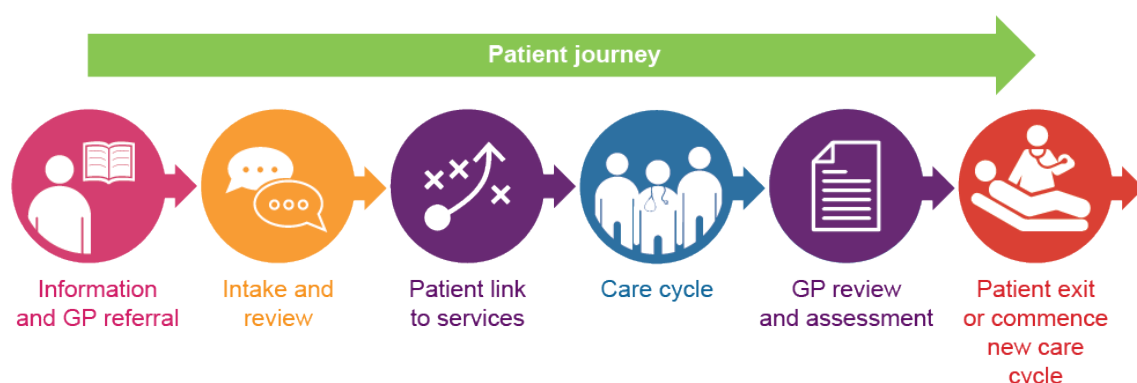
A separate referral is required for each allied health discipline and for each six session care cycle.

Under the WARATAH program, Marathon Health will then process the referral and link the patient to the relevant allied health provider so that they can start accessing services when available.

Should a patient have identified additional complexities and/or social circumstances that may be getting in the way of them being able to achieving their health care goals, they can also be connected with a WARATAH Health Linker. To activate this additional support for your patient, please indicate it in the relevant place on the referral form. A referral to a Health Linker can be made at any time through the patient's care cycle.

What is the care cycle?

Referrals are valid for up to 6 sessions of treatment, or one care cycle.

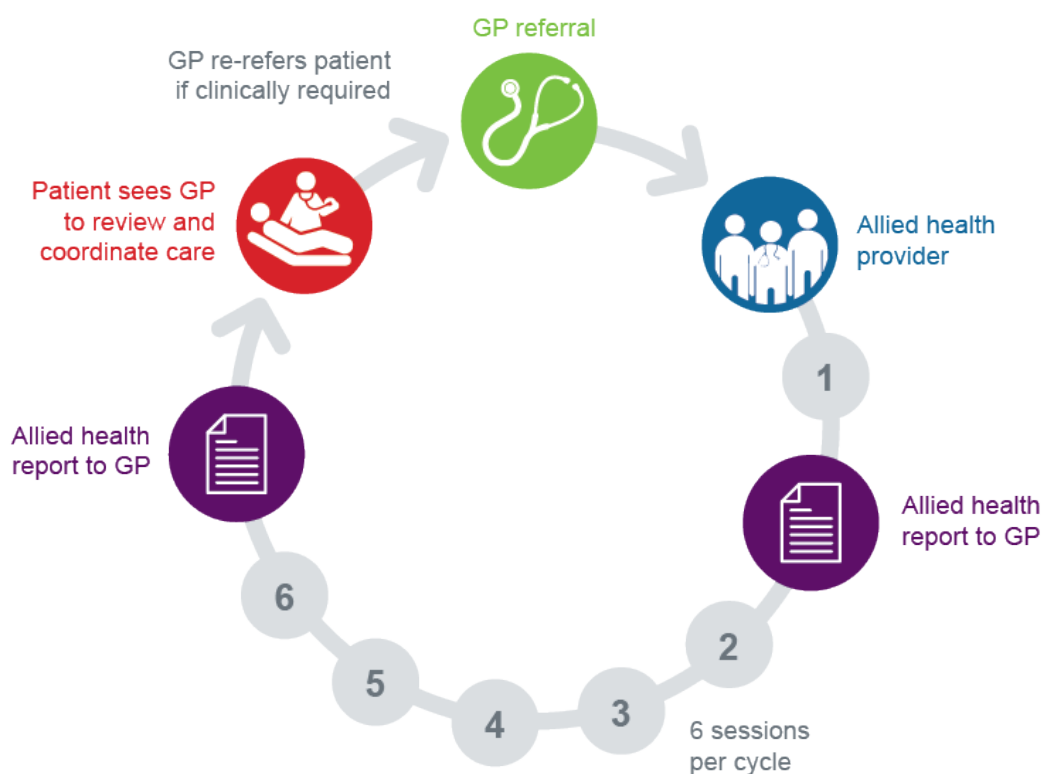


After the first appointment and at the end of the care cycle the allied health provider will send a report to the patients referring GP. The report outlines the treatment provided, the progress of the treatment towards meeting the patient's goals and recommendations for further treatment, if required.

The GP will use this report to review the patients progress and assess if further allied health treatment is clinically required, or if other treatment options are needed.

Key points:

- A new cycle of care requires a new referral
- Patients can have as many care cycles as the GP decides is clinically necessary
- A patient can access more than one WARATAH allied health service at a time, however each requires a separate referral.



What WARATAH services are delivered where?

The following allied health services are currently available under the WARATAH funding:

Allied Health Discipline	Locations serviced
Dietetics	Riverina: Temora, Tumut, West Wyalong Border: Berrigan, Corowa, Finley, Henty, Holbrook, Jerilderie, Lockhart, Tocumwal, Urana Western: Hay, Leeton, Narrandera
Diabetes Education	Riverina: Batlow, Cootamundra, Tumbarumba, Young Border: Corowa, Holbrook, Lockhart, Tocumwal Western: Culcairn, Griffith, Narrandera
Podiatry	Riverina: Cootamundra, Gundagai, Temora, Tumbarumba, Tumut Border: Moulamein, Tocumwal, Tooleybuc Western: Griffith, Hay, Hillston, Leeton
Physiotherapy	Border: Berrigan, Finley, Jerilderie, Urana

This service is supported by funding from the Murrumbidgee PHN through the Australian Government's PHN program.