

Welcome to WARATAH

What is the WARATAH program?

The WARATAH program provides free allied health services to people identified as requiring an increased need for support. If you have a chronic health condition and meet certain eligibility criteria, your GP may refer you into the WARATAH program to improve your overall health and wellbeing.

What Allied Health Services are provided by WARATAH?

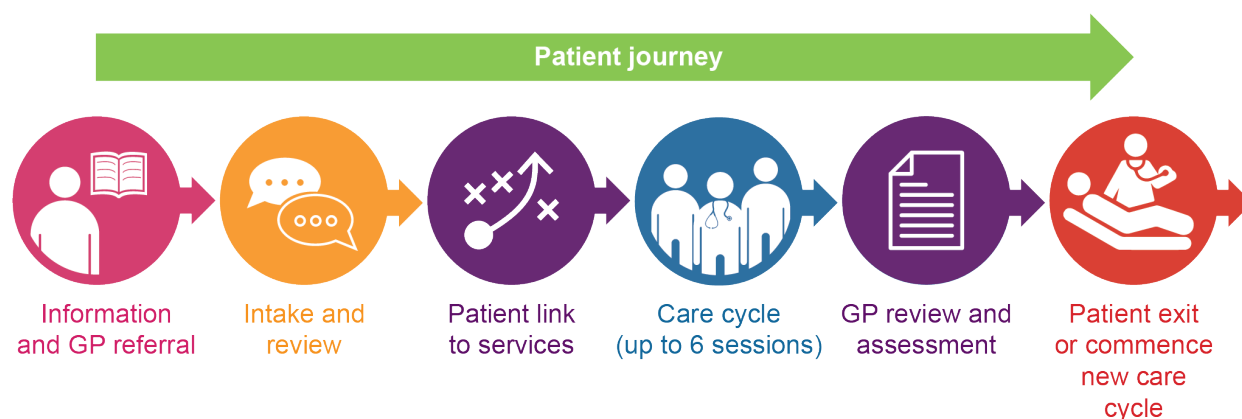
The allied health services covered by the WARATAH program are dietetics, diabetes education, podiatry and physiotherapy.

Will I be able to access allied health services outside of WARATAH arrangements?

Yes. You will still be able to access allied health services through other funding models or programs or by paying for a private service. Speak to your GP to discuss the best approach to meeting your health and wellbeing goals.

What will happen once I am referred into the program?

Once you have been referred to WARATAH, you will be contacted by your allied health clinician to arrange an appointment. After the first appointment and at the end of the care cycle, the allied health clinician will send a report to your referring GP. The report outlines the treatment provided, the progress of the treatment towards meeting your goals and recommendations for next steps. Your GP will use this report to review your progress and assess if further allied health treatment is required, or if other treatment options are needed.



How many allied health visits will I receive through WARATAH?

A referral to WARATAH will provide up to six sessions of treatment, or one care cycle. At the end of the care cycle, your GP may recommend additional sessions.

Other WARATAH support available

As a WARATAH participant you may also be eligible for additional support from a Health Linker. Health Linkers can provide support to navigate the health system if your health needs are complex. Your GP or allied health clinician will talk to you about this option if it's relevant to your needs.

Mental health services are not offered by WARATAH. Speak to your GP to discuss the best approach to accessing support for your mental health concerns.

If you have any questions about WARATAH or your referral process, please contact waratah@marathonhealth.com.au or phone (02) 6937 2000.

This service is supported by funding from the Murrumbidgee PHN from the Australian Government's PHN program.